

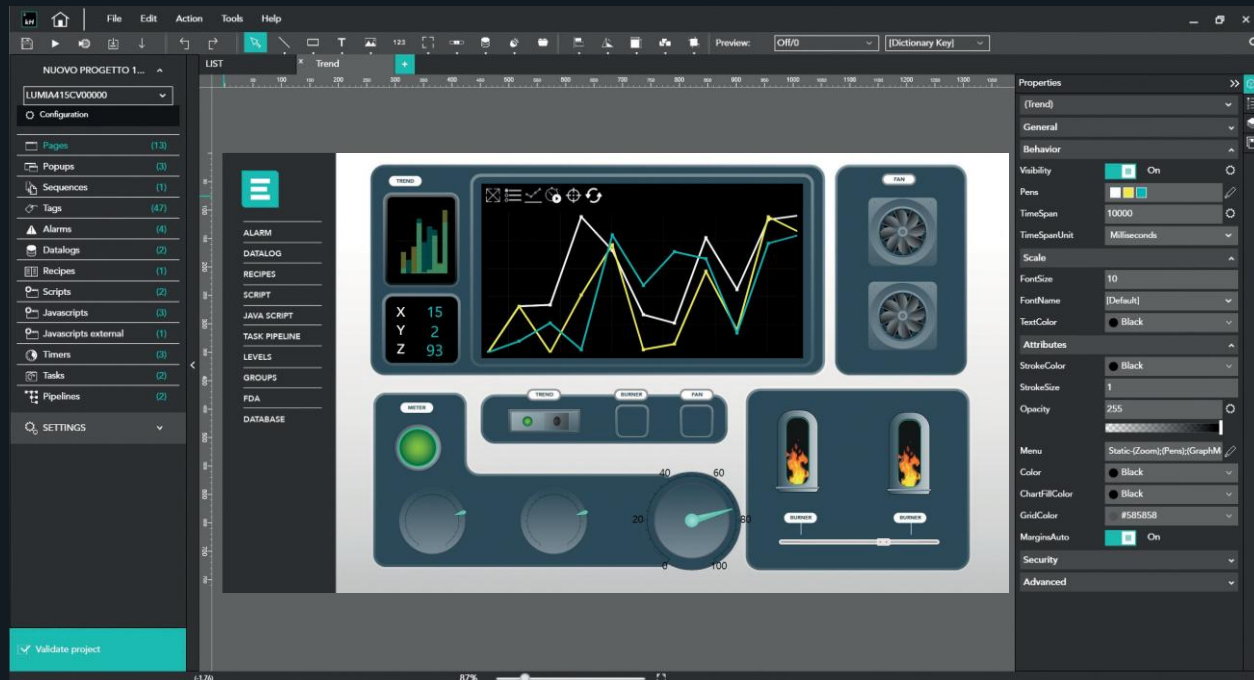
Kreo HMI



Kreo HMI

Software platform that makes the engineering and development of web based visualization and control center solutions extremely easy.

Both Linux and Windows based target devices are supported.



Integrated production report with edit and run time filtering.

IEC 61131 script online debug with breakpoints, step increment and variable watch window.

Advanced debug of the application with integrated monitoring of the edge tasks and edge to web dataexchange.

Smart recipe management with structure and archive online update.

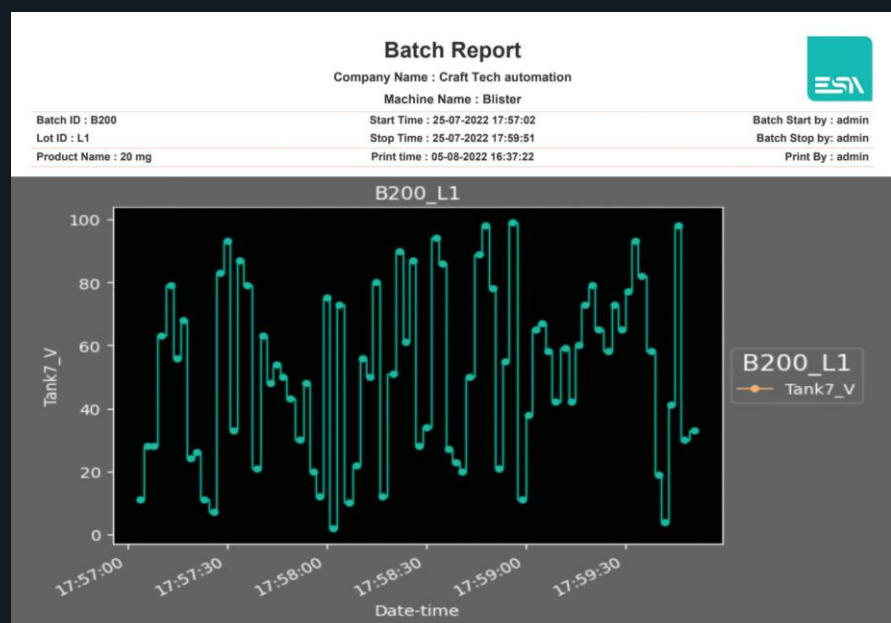
Libraries

+ Library management

- Static graphic objects
- Animated objects
- System widget
- Project widget
- ST and Java script
- Responsive container

+ SVG based library objects

+ Sharing and reusing



Kreo HMI Runtime

EdgeHMI

- + Communication drivers
- + Field data collection
- + Data aggregation
- + Elaboration



- + External Javascript



- + Multi touch and gestures



- + WebPage technology - Full HTML 5



- + Integrated PDF reader and Video player

WebHMI

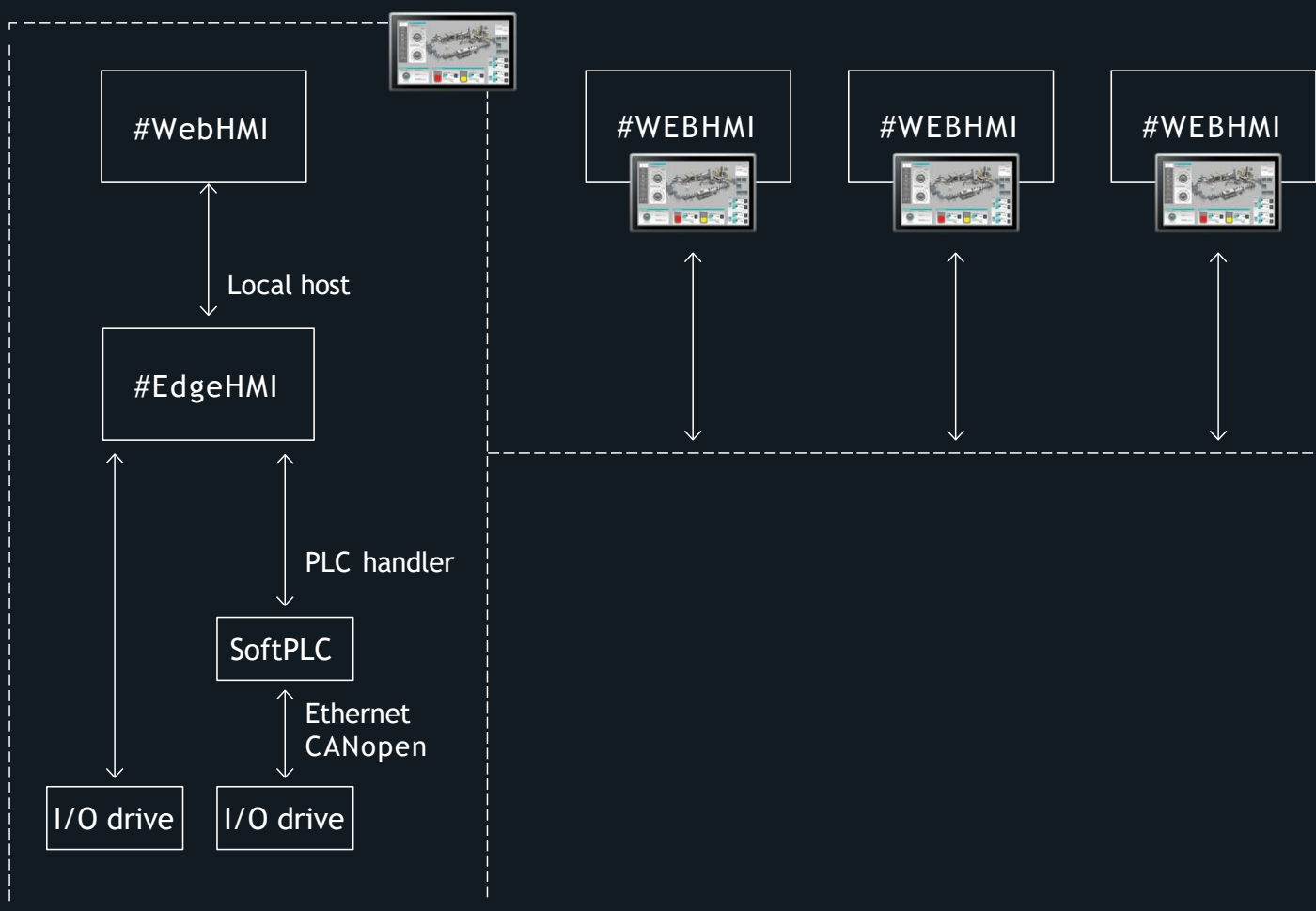
- + Visualization
- + Simple and smart User Interface



- + ST Script - IEC61131



- + Responsive design



Kreo HMI Reporting

Report Filter

- + Batch Wise Reporting
- + Date Wise Reporting

Advanced PDF Reporting Tool

Our advanced reporting tool is designed to meet the needs of modern industrial and compliance-focused environments. Key features include:

- + **Dynamic and Custom Report Design :**
Create fully customizable reports using the inbuilt editor.
- + **Integrated PDF Viewer :**
View reports directly within the system—no external software required
- + **Secure, Non-Editable Format :**
All reports are saved in a tamper-proof format to maintain data integrity and prevent falsification.
- + **Flexible Storage Options :**
All reports are saved in a tamper-proof format to maintain data integrity and prevent falsification.

Custom Header

	\$\$\$\$\$\$\$\$\$\$			\$\$\$\$\$\$\$\$\$\$		
	Equipment ID		\$\$\$\$\$\$\$\$\$\$	Report Type		Batchwise Audit Report
	Report Gen. Date & Time		06/24/2025 11:04:10	Batch Start Date & Time		\$\$\$\$\$\$\$\$\$\$
	Report Generated By		\$\$\$\$\$\$\$\$\$\$	Batch End Date & Time		\$\$\$\$\$\$\$\$\$\$
	Batch Number		\$\$\$\$\$\$\$\$\$\$			
	Product Name		\$\$\$\$\$\$\$\$\$\$			
	Recipe Name		\$\$\$\$\$\$\$\$\$\$			

- + Audit Trial
- + Active / History Alarm
- + Critical Non-Critical Alarm
- + User Activity
- + Data-Log
- + Recipe Report
- + Batch Recorded History
- + Trend Report
- + Batch Summary
- + Batch Setting Parameter
- + Combine Report

Reports

+

Reports

Custom Pages

+ ×

▽	Name ▽	Description ▽
1	Datewise Audit Report	
2	Dewatise Alarm History Report	
3	Datewise User Trail Report	
4	User Report	
5	Batchwise Audit Trail Report	
6	Batchwise Alarm History Report	
7	Batchwise User Trail Report	
8	BATCH SUMMARY REPORT	
9	Datewise Production Report	
10	Batchwise Production Report	
11		
12		

Module properties

Type

FDA

Description

Active alarm

New page

Alarm history

Header

Alarm status

Footer

DataLog

Font

Trend

Time mode

TagList

Csv

CustomPage

Recipe

Trend3DV

Users

Header table repeated in each page

☐

Users Only

☐

Table fields

+ × ↑ ↓ ↺

Type	Visible	Header	X	Line	Format
Date/Time ▾	<input checked="" type="checkbox"/>	Date/Time	20	0	YYYY-MM-DD HH:MM:SS (H24)
Module/Action ▾	<input checked="" type="checkbox"/>	Action	100	0	
Note ▾	<input checked="" type="checkbox"/>	Description	100	1	
Object ▾	<input checked="" type="checkbox"/>	Event Message	200	0	
New Value ▾	<input checked="" type="checkbox"/>	New Value	350	0	
Old Value ▾	<input checked="" type="checkbox"/>	Old Value	400	0	
User ▾	<input checked="" type="checkbox"/>	User	450	0	

Custom Footer

Reviewed By : Admin page 1 of 1 Verified By : Esa
 Reviewed Time : 2025-06-25-11:32:57 Verified Time : 2025-06-25-11:33:53

Kreo HMI Audit Trial

Feature

- + Electronics signature
- + Digital Recorded
- + Retype Password
- + Add Comments to pdf
- + Print/PDF by Filter

Comprehensive User Action Tracking

The audit trail logs detailed user actions to ensure complete traceability and accountability. Actions recorded include:

- + **Button/Switch/Numerical value entries:** :
Tracks changes made to numeric parameters, Logs the value before and after the change. Records who made the change, ensuring traceability.
- + **User /Login / Logout / Change information:**
User logs actions like Login, Logout, adding, removing, blocking, or unblocking user accounts.
- + **Recipe Operations :**
Tracks actions such as saving, update, upload, or download, delete
- + **Alarm Actions:**
Tracks actions like enabling, disabling, or acknowledging alarms
- + **System Actions:**
Tracks system-level events, including start, exit, or shutdown operations
As well As backup, Restore

Date Time	Event Message	Old	New	Active User
06/24/2025 13:32:28	Users/Logout			System
06/24/2025 13:32:28	Users/Login			Admin
06/24/2025 13:32:38	Users/Password changed: Admin			Admin
06/24/2025 13:33:37	Users/Added: Ketan New User Created			Admin
06/24/2025 13:34:07	Users/Password changed: Mn1			Admin
06/24/2025 13:34:19	Users/Group changed: Ketan: : Administrator -> Manager			Admin
06/24/2025 13:34:36	Users/Locked: Mn1			Admin
06/24/2025 13:34:43	Users/Unlocked: Mn1			Admin
06/24/2025 13:35:32	Users/Logout			Admin
06/24/2025 13:35:32	Users/Login			System
06/24/2025 13:35:46	Users/Logout			System
06/24/2025 13:35:46	Users/Login			Ketan
06/24/2025 13:35:53	Users/Password changed: Ketan			Ketan
06/24/2025 13:36:09	Auto Feeder ON button pressed	0	1	Ketan
06/24/2025 13:36:09	Auto Feeder OFF button pressed	1	0	Ketan
06/24/2025 13:36:40	Tube Feeding Cylinder ON Degree Changed	0	25	Ketan
06/24/2025 13:37:22	Recipes/Saved: RecipeName.Recipe 1			Ketan
06/24/2025 13:37:34	Recipes/Downloaded: RecipeName.Recipe 1			Ketan
06/24/2025 13:39:12	Batch Start Batch Started			Ketan
	Comments: Batch start comment			
06/24/2025 13:40:10	Batch pause Batch Pause			Ketan
	Comments: Batch Pause due to temp high			
06/24/2025 13:41:18	Batch Resume			Ketan
	Comments: Batch Resume due to normal temp			
06/24/2025 13:42:03	Batch Stop Batch Stop			Ketan
	Comments: Batch stop as per production			

Feature

- | | | | |
|--|---|--|--------------|
| | Create User | | Remove User |
| | Change Password
(without Current Password) | | Change Group |
| | Lock User | | Unlock User |
| | Settings | | |

Password Options

Minimum Password size	<input type="text" value="8"/>
Minimum number of Symbol Characters	<input type="text" value="1"/>
Minimum Number of Numeric Characters	<input type="text" value="1"/>
Minimum number of Alpha Characters	<input type="text" value="1"/>
Password Expiry(days)	<input type="text" value="365"/>
Notification for Password Expiry (days)	<input type="text" value="10"/>
Failed Login Attempt	<input type="text" value="3"/>

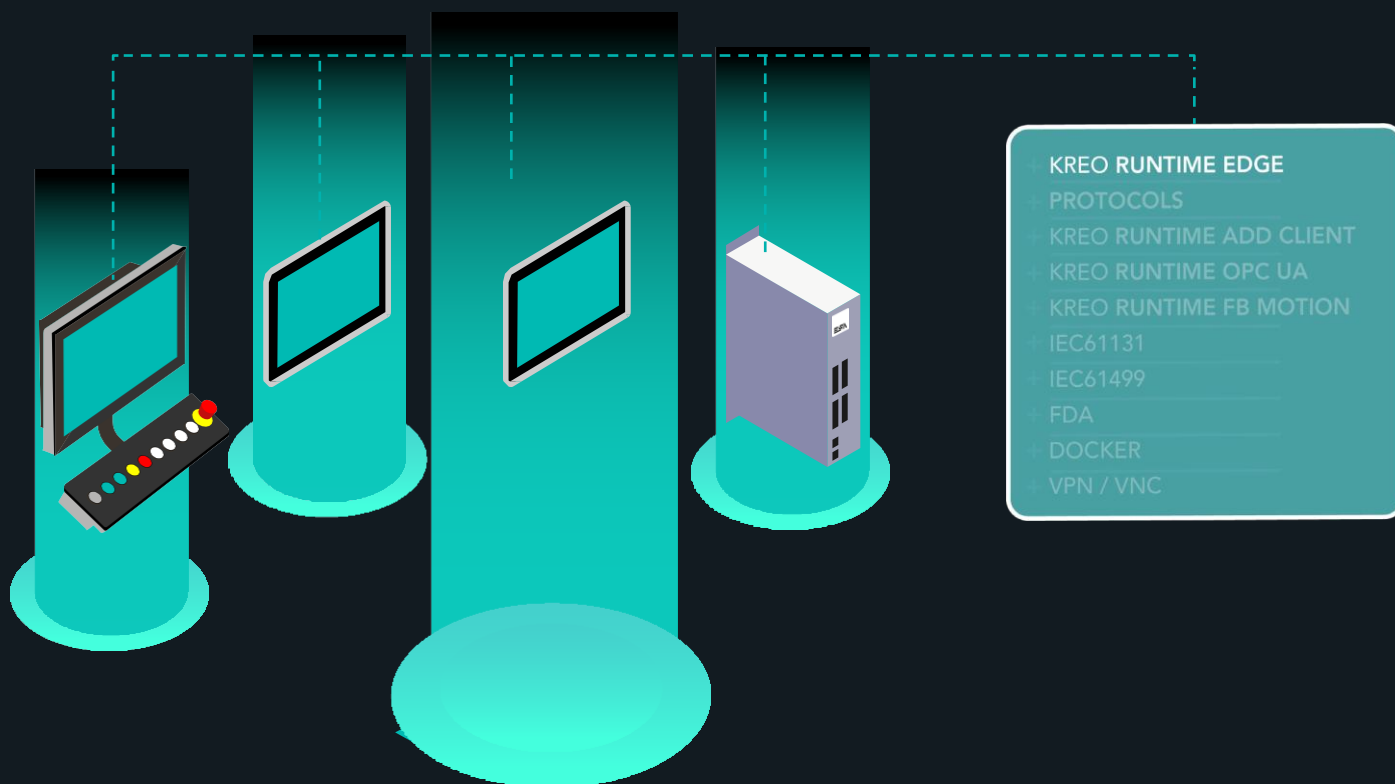
Log On/Off Options

Auto Log off accounts after(Min)	<input type="text" value="5"/>
------------------------------------	--------------------------------

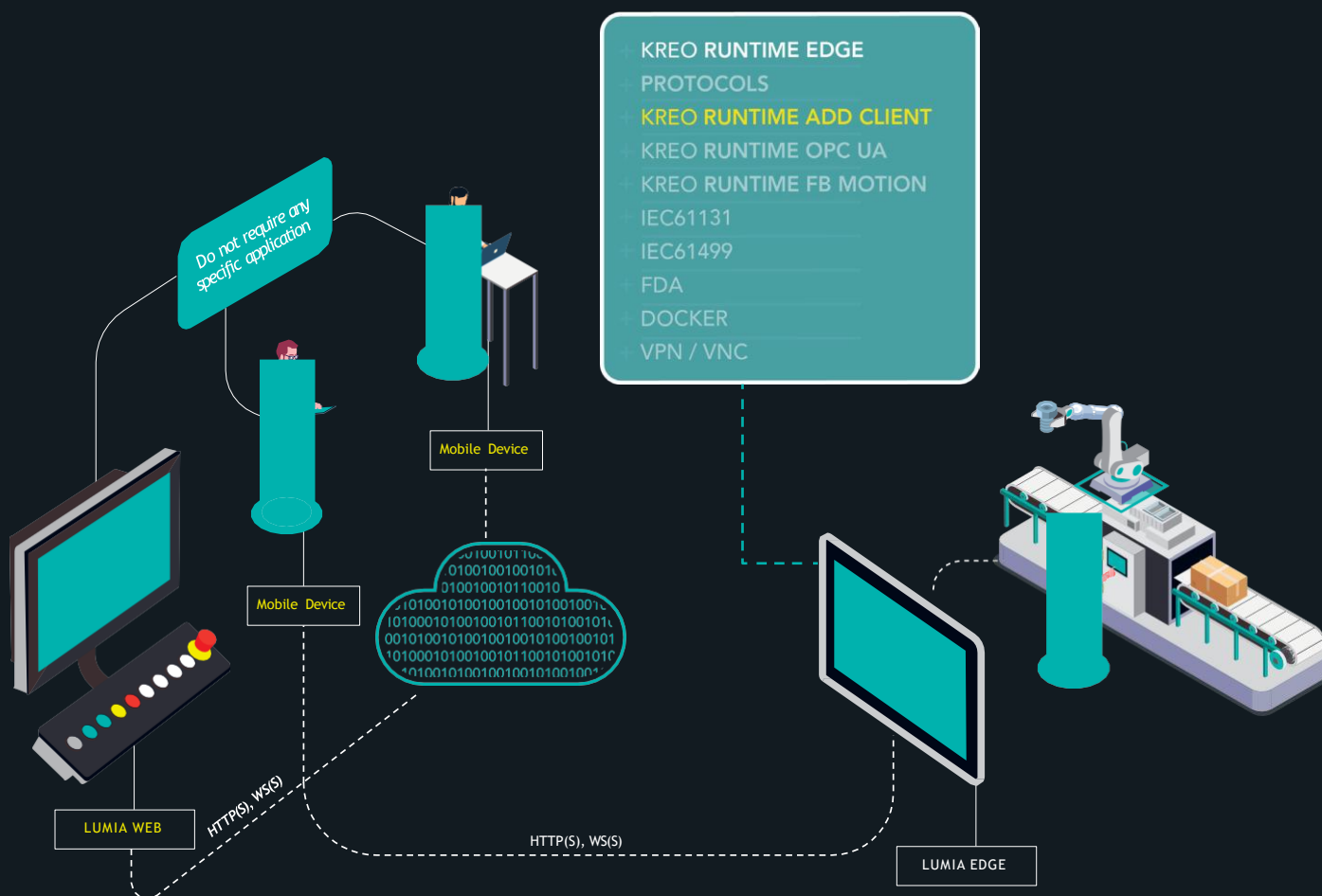
Time	Code	User	FDA Note
06-24-2025 13:35:46	Users / Logout	System	System
06-24-2025 13:35:46	Users / Login	Ketan	Manager
06-24-2025 13:35:53	Users / Password changed	Ketan	Ketan
06-24-2025 14:04:40	Users / Logout	Ketan	Manager
06-24-2025 14:04:40	Users / Login	System	System
06-24-2025 14:04:58	Users / Logout	System	System
06-24-2025 14:04:58	Users / Login	Parie1	Superuser

[illegible]

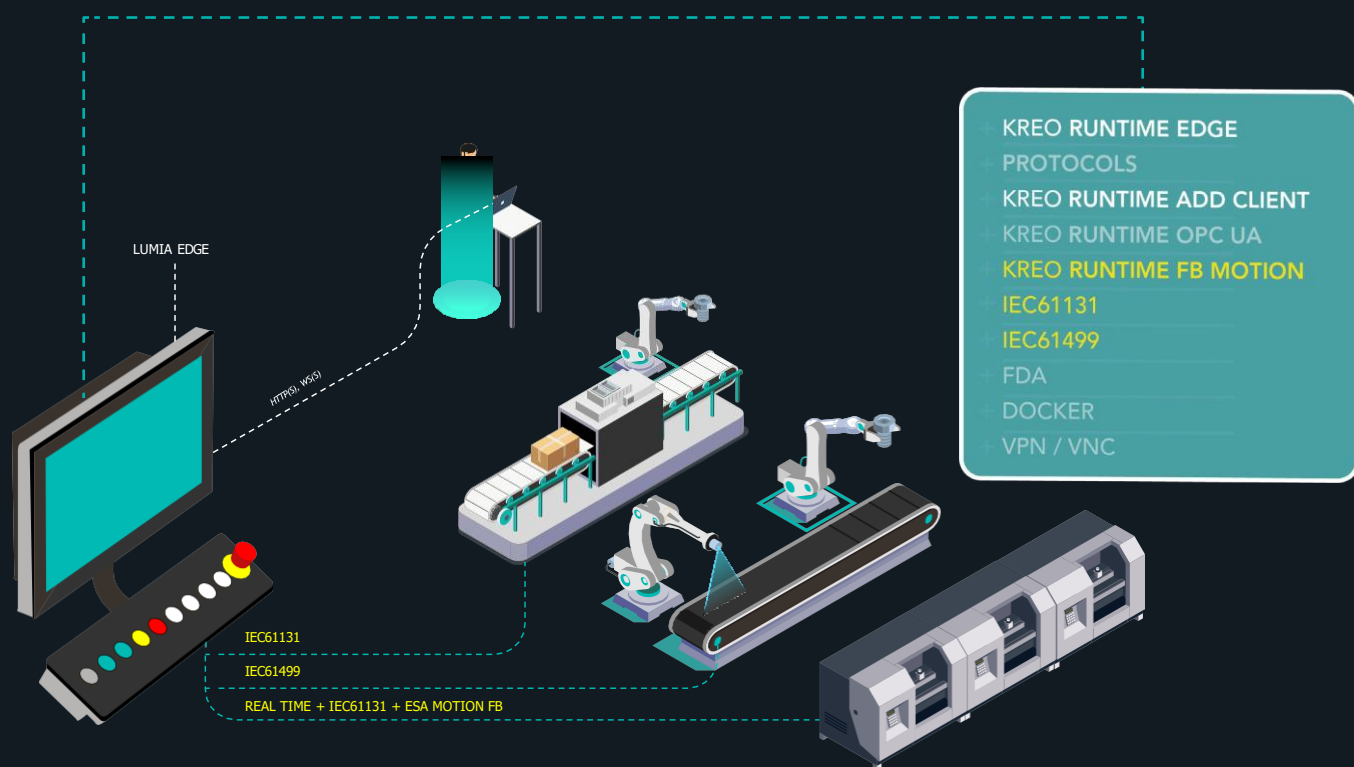
LOCAL CLIENT - LUMIA EDGE



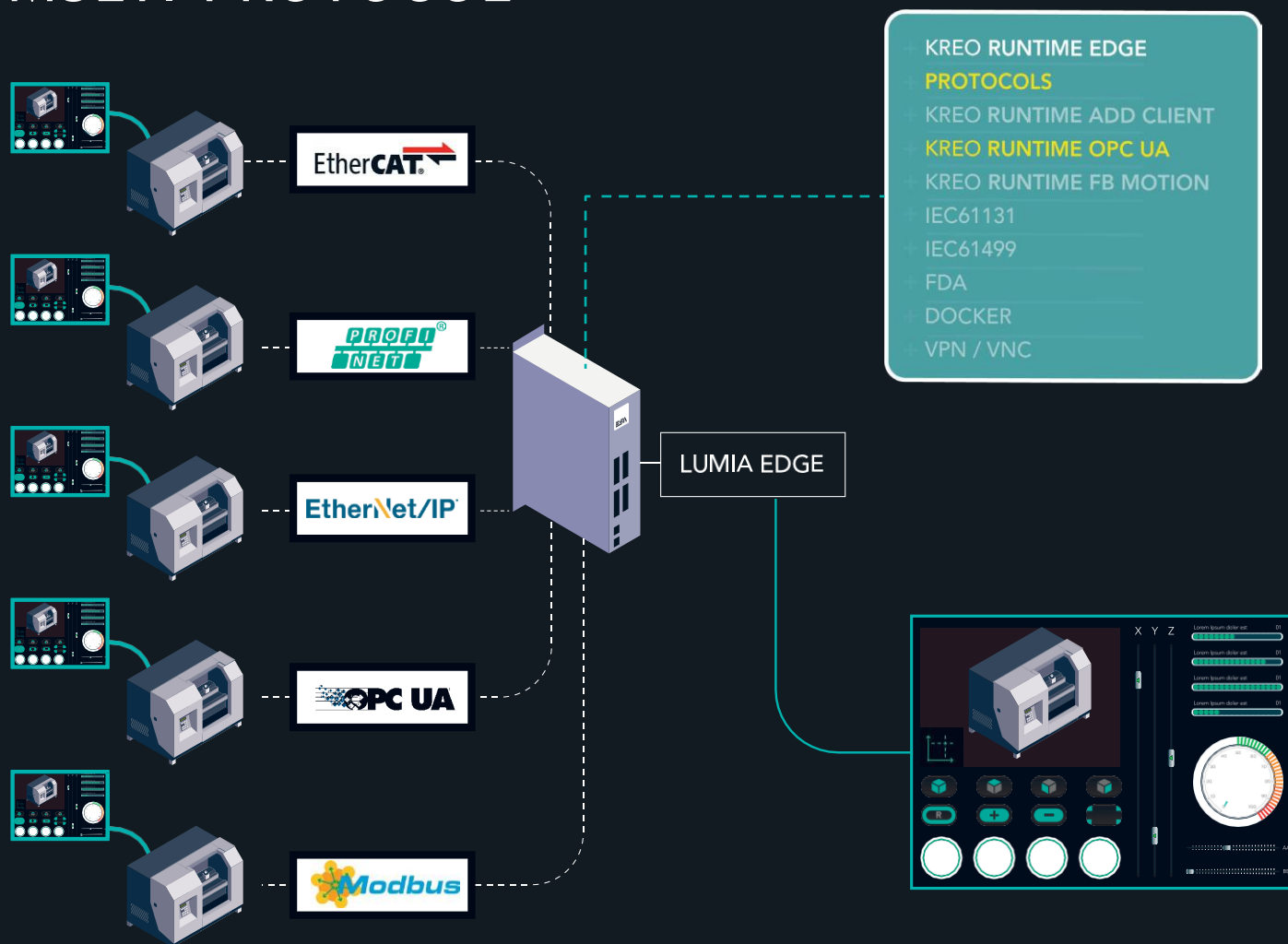
MULTI-CLIENT



MULTI-RUNTIME



MULTI-PROTOCOL

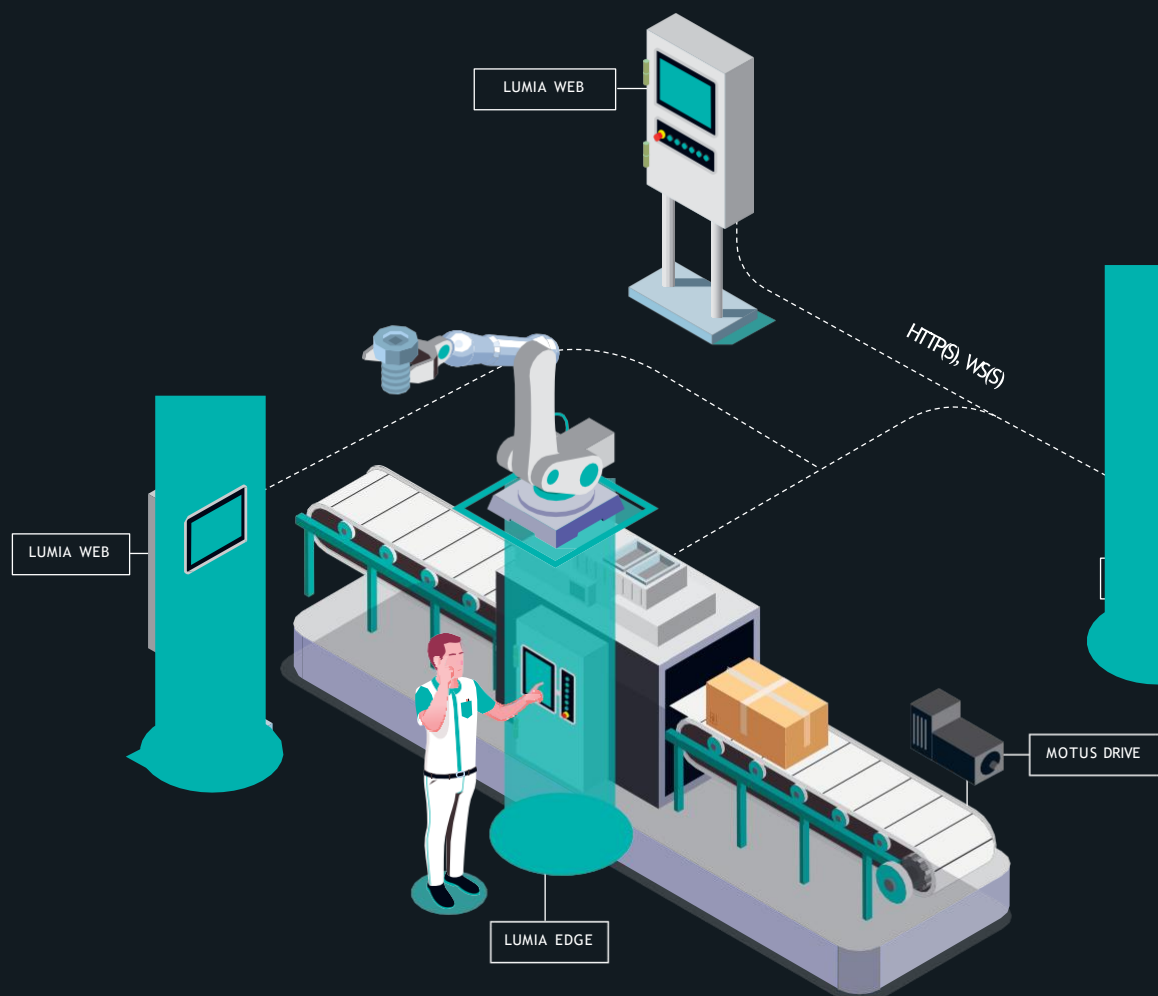


REMOTE MAINTENANCE

KREO RUNTIME EDGE
PROTOCOLS
KREO RUNTIME ADD CLIENT
KREO RUNTIME OPC UA
KREO RUNTIME FB MOTION
IEC61131
IEC61499
FDA
DOCKER
VPN / VNC



MULTI-EDGE

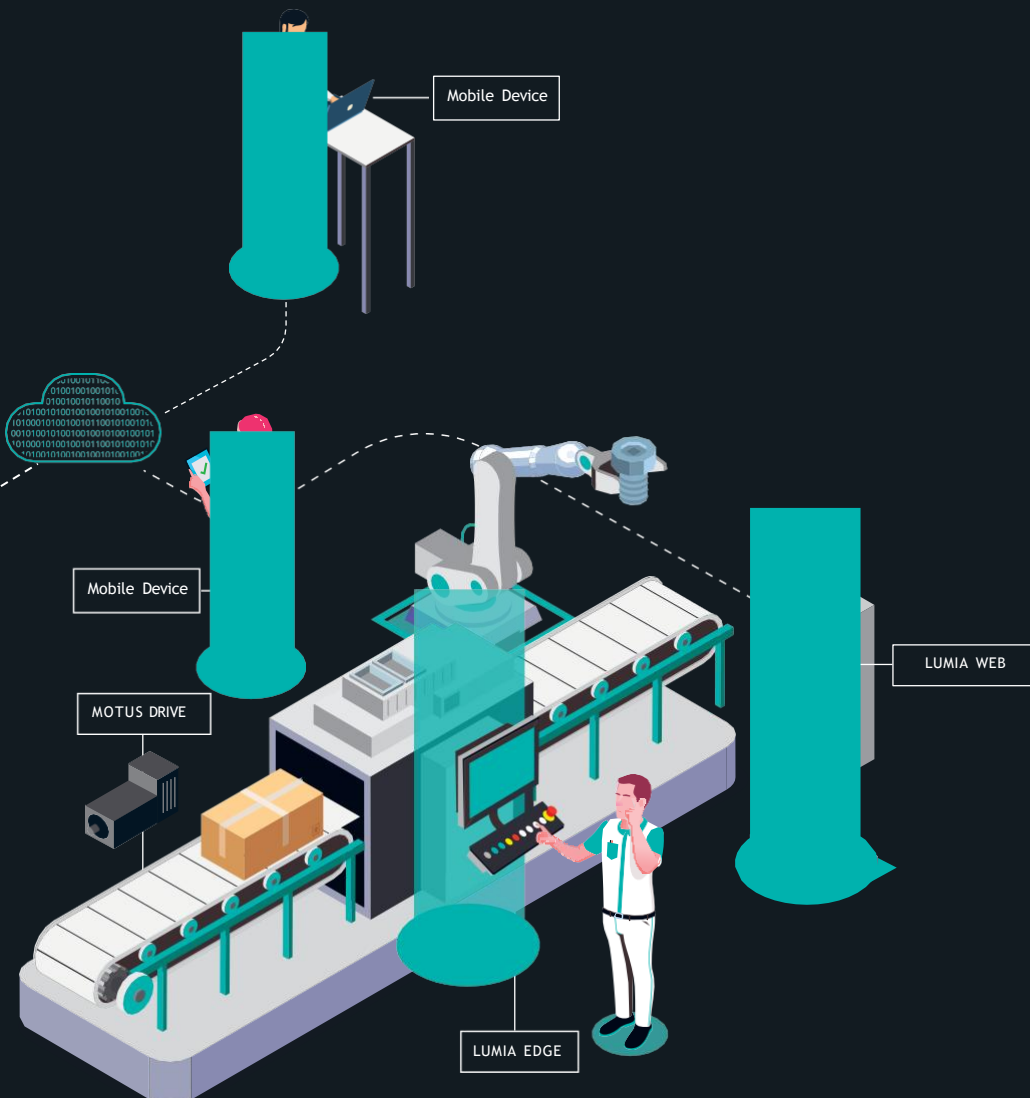
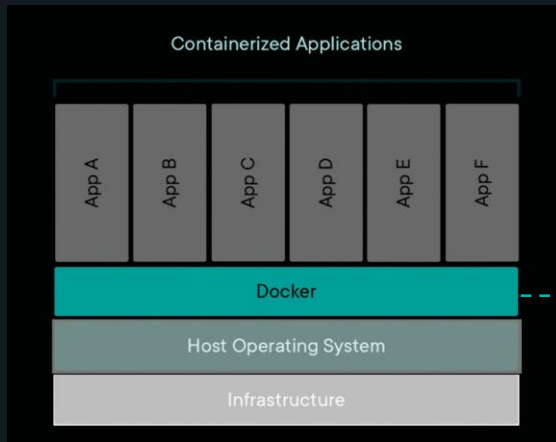




DOCKER CONTAINERS

Linux Docker is the containerization technology that enables the creation and use of Linux containers. With Docker the customer has the possibility of installing and running third party applications together with the predefined application provided with the Lumia platform.

- KREO RUNTIME EDGE
- PROTOCOLS
- KREO RUNTIME ADD CLIENT
- KREO RUNTIME OPC UA
- KREO RUNTIME FB MOTION
- IEC61131
- IEC61499
- FDA
- DOCKER**
- VPN / VNC



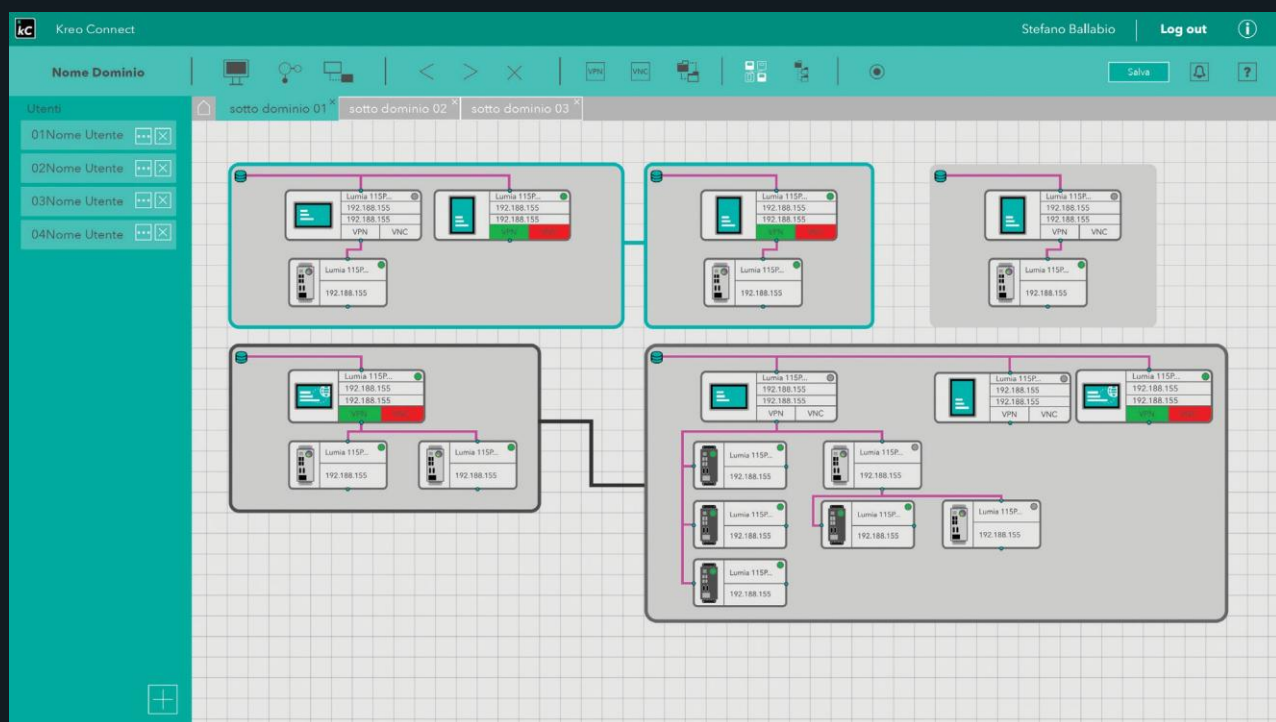
Kreo Connect



Easy, secure and efficient access to the machine anywhere and anytime in order to provide high level support.

The machine builder service team can improve the support activities reducing dramatically both the response delay and the cost. The support engineer having a standard internet connection can access the control unit, the HMI and all the devices connected to the OT network.

The debug and fix of the application is almost immediate.



Cross platform application available for Windows and Linux OS.

Remote desktop allows to lock the remote input to avoid remote operators working on the HMI while during maintenance operations.

VPN traffic is routed to multiple devices of the OT local network so it is possible to establish the VPN tunnel with the complete machine network.

The domain can manage an unlimited number of endpoints, an unlimited number of Users and Groups and unlimited traffic.

Allows the creation of domain and subdomains. This architecture let the machine builder to provide the required access to the customer assigning required privileges.

- + Preinstalled in all LUMIA lines of products
- + Cloud based solution for maintenance and data collection
- + No need of modifying any firewall policy nor IT configuration
- + Based on standard https protocol
- + Remote desktop, file transfer, chat
- + VPN for the online debugging and application update
- + TLS 1.2 security protocol for the highest security level

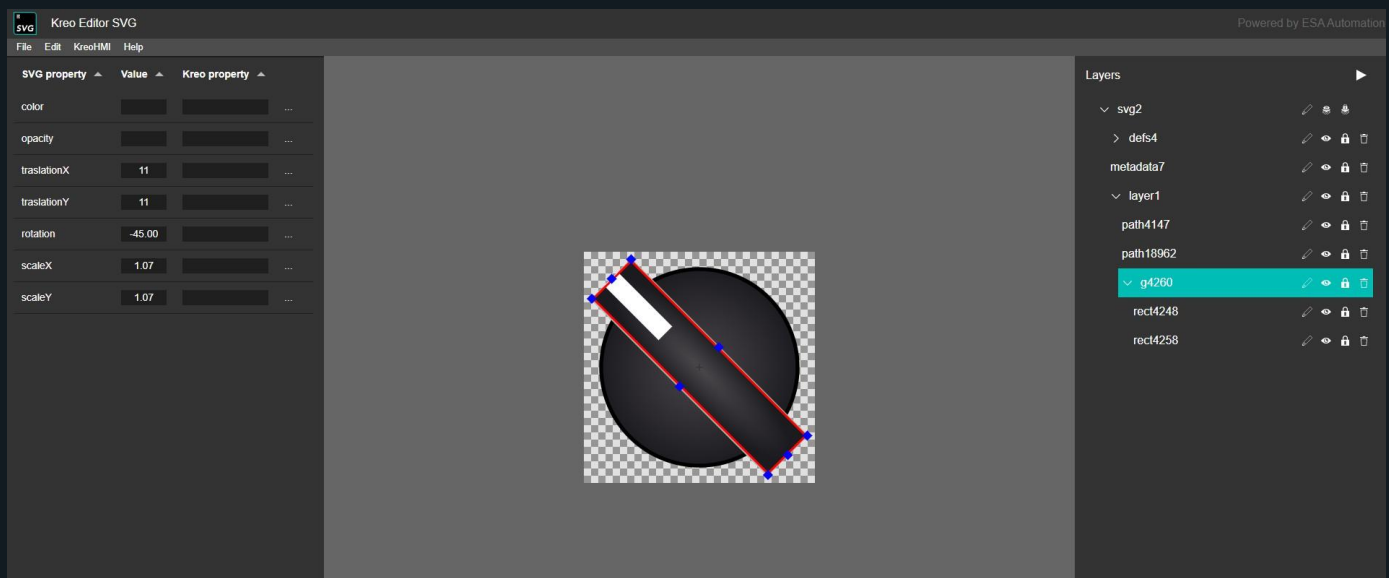
KREO SVG CONVERTER

Create your own SVG graphics library by yourself.



Kreo SVG
Converter

KREO SVG CONVERTER is the utility that allows the user to develop the graphic libraries of Kreo HMI starting from a generic SVG object. The object can be developed by a graphic studio or downloaded directly from internet. There is no limitation; any object can be animated and inserted in a Kreo HMI library. The user interface of KREO SVG CONVERTER is totally graphic and it is not necessary to write any HTML5 source code.



- + Fully web based utility continuously updated
- + Only a simple registration on the ESA website (www.esa-automation.com) is required
- + A powerful SVG editor is included that allows the user to group the graphical layers
- + Definition of Kreo properties with association to the SVG layers
- + Different animation possibilities (translation, rotation)
- + Color management of the different levels

Visit the new website

esa-automation.com

The complete range of ESA products.



+ ESAWARE SUITE
tutte le forme
dell'automazione

Software
Attiva la tua licenza Software o crea il tuo nuovo Dominio everywhere.
Quali spazi superassorbano ultrasuoni, Riusa comodamente vivere nascosto.

+ Celle robotizzate ad
alta integrazione

MOTOR
Approfondisci

HANDHELD
Approfondisci

ROBOTIC
Approfondisci

PUSH BUTTONS
Approfondisci

VESA
Approfondisci

ERGOMAX
Approfondisci

I/O
Approfondisci

ENERGY
Approfondisci

Prodotti > IPC > LUMIA Panel / IPC - Soluzione Modulare

SOFTWARE
Approfondisci

PANEL
Approfondisci

BOX
Approfondisci

DRIVE
Approfondisci

INOX
Approfondisci

di Innovazione Industriale

Internazionale impegnata nella rivoluzione
40 anni. Il nostro obiettivo è realizzare
industriale che contribuiscono a rendere
più sostenibile, efficiente, sicuro e
realizzato.
mento al cliente, eccellenza
innovazione. E' tramite questo
fide di mercato per fornire
anticipare le loro esigenze.

LUMIA Panel
Soluzioni