



Craft Tech
Automation

407/B, Sahitya business park, near Sahjanand Businesspark,
Sardar Patel Ring Rd, Nikol,
Ahmedabad, Gujarat 382415

Industrial
IoT

In Strategic Partnership with



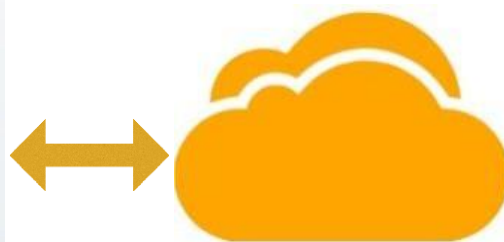


Craft Tech
Automation

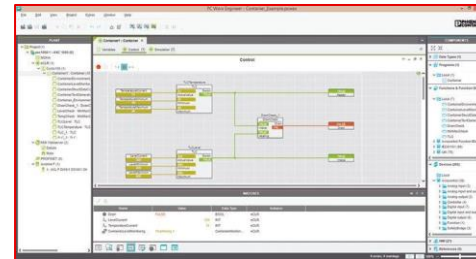
1



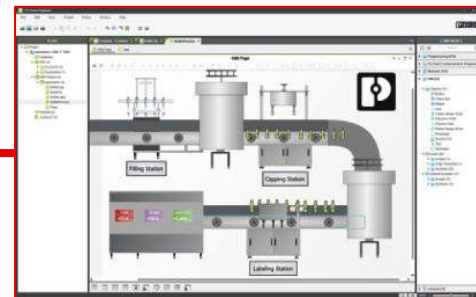
PLC NEXT



**Remote Access: PLC
NEXT Engineer**



Web HMI



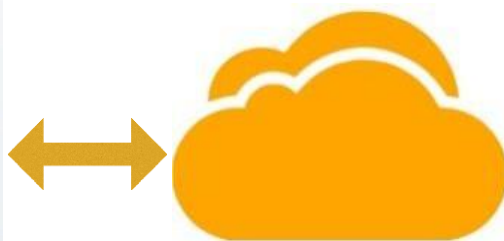


Craft Tech
Automation

2



PLC NEXT



Remote Access

Web HMI

Alerts: SMS & EMail

**Real-Time Remote
Monitoring & Control**

Tag Data Collection

**Advanced Data
Analysis Tools**

**Data history &
Trends**



Craft Tech
Automation

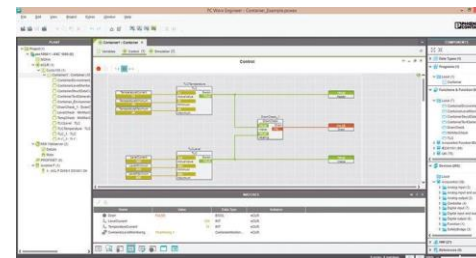
3



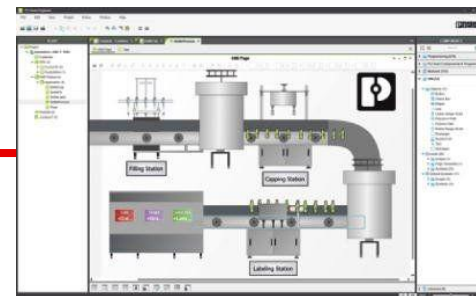
PLC NEXT



Remote Access: PLC



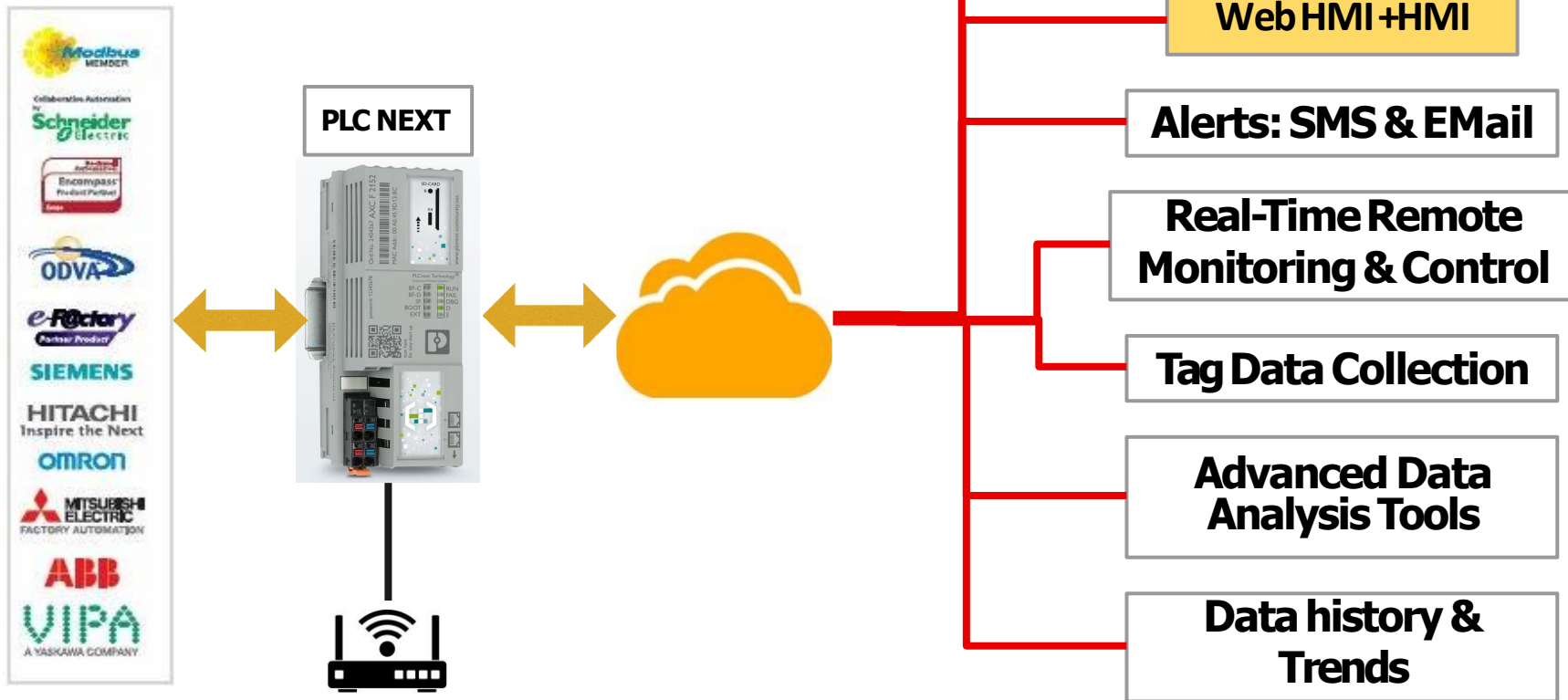
Web HMI





Craft Tech
Automation

4





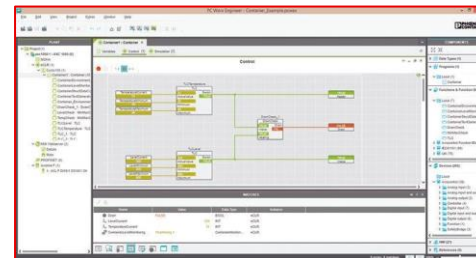
Craft Tech
Automation

5

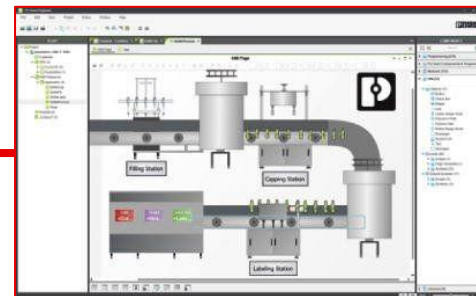


EW50

Remote Access: PLC

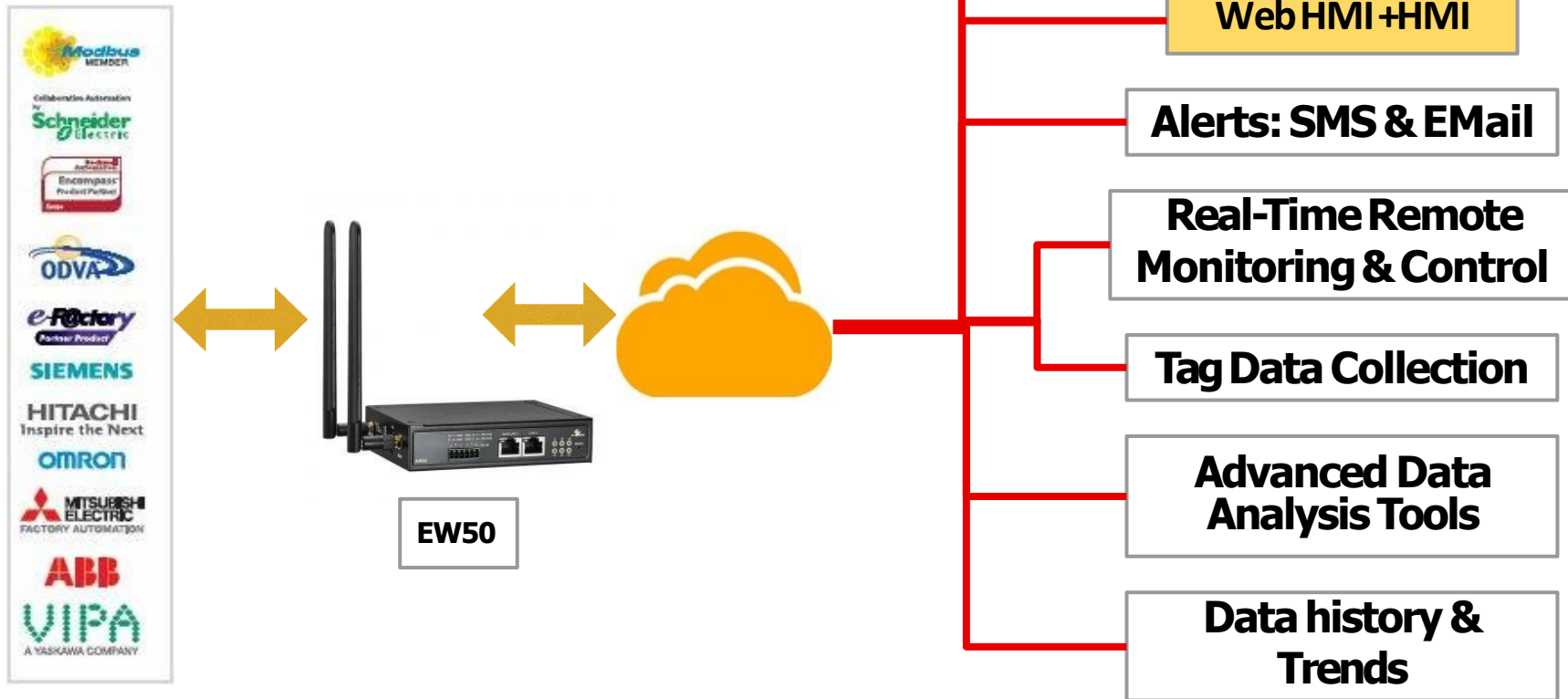


Web HMI





5



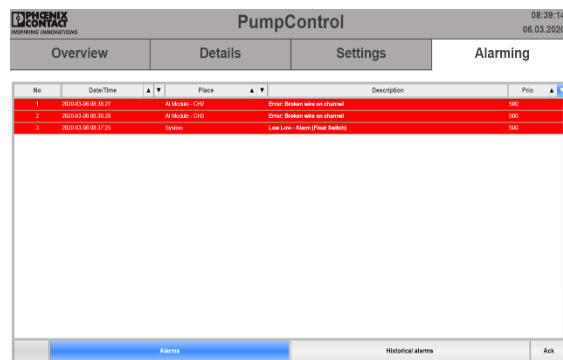
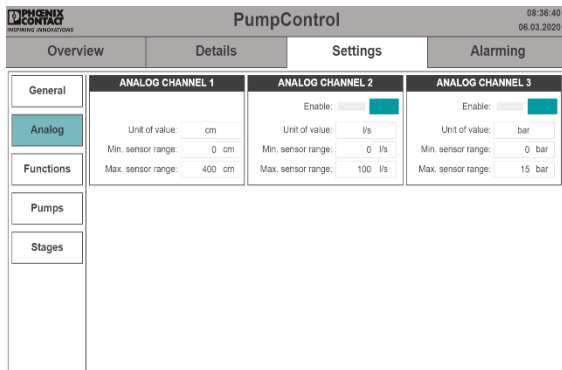
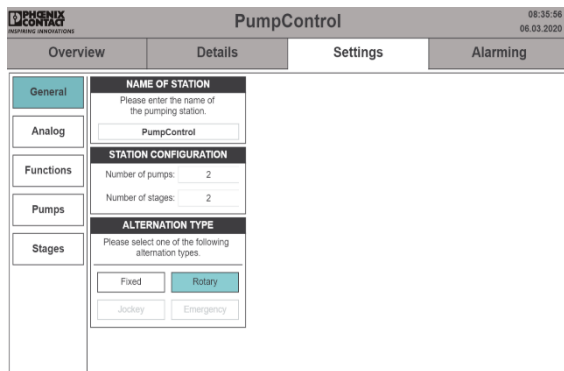
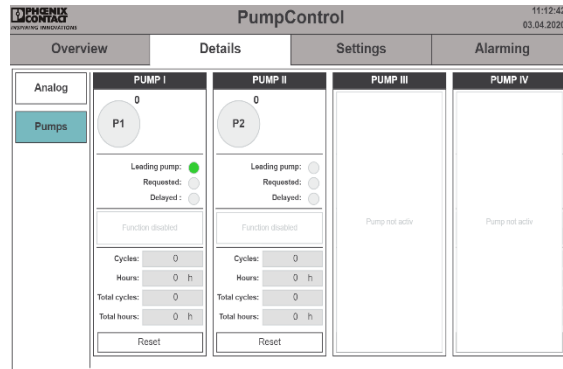
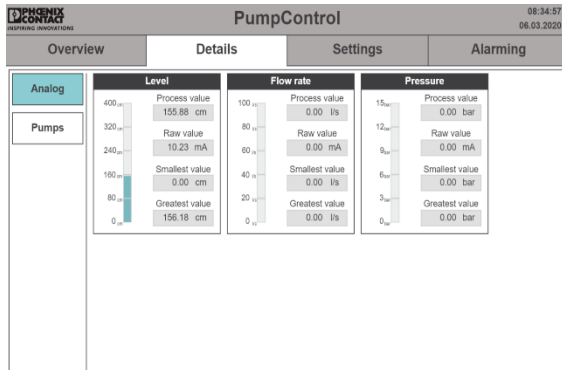
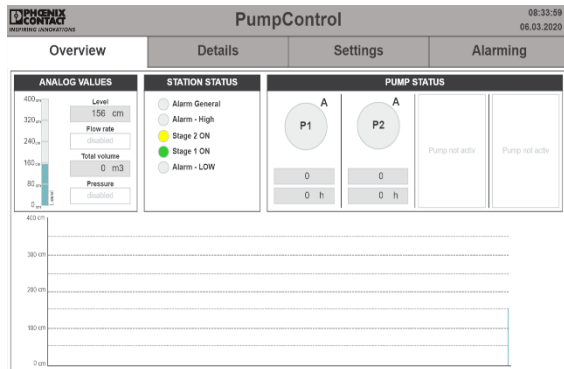
Pump Control application

- Save time and money by continuous monitoring and controlling of your pumping stations with up to four Pumps based on PLCnext Control and Smart Elements.
- Easily transform your controller into a pumping station without any engineering or programming effort!
- Pump Control from PHOENIX CONTACT takes on all of the control and regulation tasks for distributed pumping stations. Ensure the cost-effective and reliable operation of your pumping stations with up to four pumps.
- The app collects relevant measurement and operational data to diagnose a variety of operational states, such as pump settings. For example prevent your pumps from dry-running thanks to intelligent level control. The continuous measurement of operational data also enables predictive maintenance for your pumping station.
- Assure your system availability and download your automatic Pump Control now.



Craft Tech
Automation

Pump Control application





Craft Tech
Automation

407/B, Sahitya business park, near Sahjanand Businesspark,
Sardar Patel Ring Rd, Nikol,
Ahmedabad, Gujarat 382415